

Discover Your Next Cruise & Port Destination



[クルーズトラベラー]

CRUISE Traveller

Home Port of Seto Inland Sea Cruising
Set Sail from Kobe Port
Explore the Stunning Seto's Seascapes

Port of Kobe & Seto Inland Sea



Port of Kobe & Seto Inland Sea

by Fly&Cruise

Home Port for Seto Inland Sea Cruise

Discover from Kobe Port!

Encounter with the Beautiful Scenery of Seto

Enjoy the beautiful scenery woven with countless islands aboard a Seto Inland Sea cruise departing from Kobe Port now getting attention as a hub. The historic Kobe Port offers numerous attractive spots and culinary delights in close proximity. Take advantage of fly-and-cruise options from Kobe Airport* or Kansai International Airport and enjoy a cruise from Kobe Port to the Setouchi region.

* Spring 2025 International charter flights scheduled to begin operations
Around 2030 Scheduled start of scheduled international flights

1 | Pre Hotel Stay

KOBE

Exploring Kobe by Sea and Mountain



1: The lighthouse of Kobe Meriken Park Oriental Hotel, whose lighting ceremony was held at 7:07 PM on July 7, 1995. 2: The hotel lobby is notable for its impressive high ceiling atrium. 3: The lighthouse flashes once in red and once in green alternately every 10 seconds. 4: Terrace & Dining "ALL FLAGS" offers a diverse breakfast buffet. 5: The hotel building has its gently curved design.



If you board a cruise from Kobe, staying at a bayside hotel is ideal to soak in the port atmosphere. For people departing from Naka Pier Cruise Terminal, the Kobe Meriken Park Oriental Hotel is recommended because it is connected to the terminal. This hotel is unique in Japan and very rare worldwide because of its official lighthouse. Originally a lighthouse was installed on the rooftop of the former Oriental Hotel at Kyomachi in Kobe as a symbol of the port town. After the Great Hanshin-Awaji Earthquake the hotel was forced to close but the lighthouse tradition was passed on to this sister hotel.



Data	
KOBE MERIKEN PARK ORIENTAL HOTEL	▶ MAP ①
5-6 Hatobamachi, Chuo-ku, Kobe https://www.kobe-orientalhotel.co.jp	

KOBE PORTER

Luggage transport service between airport and port

"KOBE PORTER" luggage transport service for cruise passengers embarking and disembarking at Kobe Port has been launched. On embarkation day same-day delivery is available from the counter at Kobe Airport or Kansai International Airport to the cruise terminal.

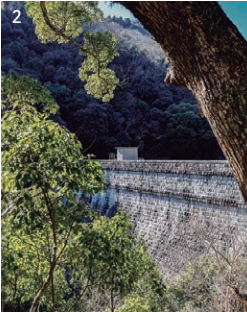
On disembarkation day luggage can be delivered from the cruise terminal to the airport counter same day (same-day delivery may not be available depending on arrival times and flight schedules).



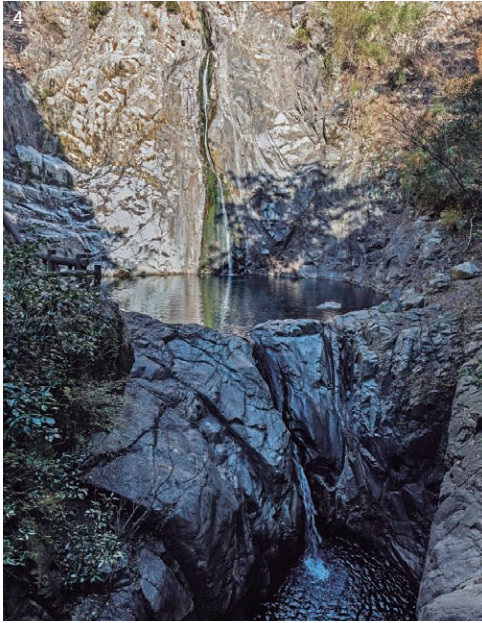
2 | Discover Kobe's Waters



1: The Nunobiki Reservoir area, where you can hike from Shin-Kobe bullet train Station. 2: The Nunobiki Gohonmatsu Dam, the first gravity-type concrete dam in Japan. 3: Momiji no Chaya, famous for its sukiyaki, is about 10-minute walk from Kaze no Oka Station. 4: Take a walking path to Nunobiki Falls, selected as one of "Japan's Top 100 Waterfalls." 5: Toyouke Inari Daimyoin Shrine is located on the north side of the dam. 6: A distant view of Kobe Port seen from the ropeway. 7: The sukiyaki made with select beef and Kujo green onion is winning popularity.



Japanese famous writer Ryotaro Shiba referred to Kobe Water as : "Sailors arriving in Kobe from foreign countries looked forward to loading 'Nunobiki water' here. This was because the water didn't spoil during the long voyages and tasted good." I planned to visit this water source by taking the Nunobiki Ropeway. From the gondola you can see the Nunobiki Gohonmatsu Dam, which looks imposing just like a European castle wall. Completed in 1900, it is the oldest gravity-type concrete dam in Japan. From the Kaze no Oka Station on the ropeway, it's about an hour's easy hike to Nunobiki Falls. Along the way I enjoyed sukiyaki cooked with select beef at "Momiji no Chaya". The majestic reservoir embraced by green mountains was sparkling brilliantly in the sunlight.



Data
Nunobiki Gohonmatsu Dam Weir ▶MAP 2
Nunobiki Falls ▶MAP 3
Fukuiiai-cho, Chuo-ku, Kobe https://www.feel-kobe.jp
Data
Kobe Nunobiki Ropeway ▶MAP 4
1-4-3, Kitano-Cho, Chuo-ku, Kobe https://www.kobeherb.com/view/ropeway



8: Kobe Shushinkan is a sake brewery that incorporated the first base isolation structure in Japan after the Great Hanshin-Awaji Earthquake. 9: The brewery was established in 1751 and their flagship brand is "Fukuju". There houses also a brewery inside Kobe Shushinkan which can be toured (reservation required). 10: All "Fukuju" branded sake including "Fukuju Junmai Eco Zero" are carbon free (effectively zero CO2 emissions).

11: At Kikumasamune you can observe the craftsman's skill of barrel-making with only cedar boards and bamboo and no nails nor adhesives used. 12: The adjacent "Sakazuki Exhibition Hall" displays sake vessels. 13: Taste the Hyogo Prefecture-limited "Hyakumoku Junmai Daiginjo Muroka Genshu" attending a sake tasting. 14: There's a sake tasting corner where you can sample two types of sake, one cup each (500 yen).



A Journey Evaluating Kobe's Water



One of reason for the deliciousness of Kobe's sake is its medium-hard water containing minerals filtered through the granite layers of the Mt.Rokko range. Because of its high-quality water, sake from Nada utilizing sea routes from Nishinomiya by barrel shipping agents became popular even in Edo(Tokyo). Recently I visited two sake breweries in Nada Gogo that are undertaking unique initiatives. "Fukuju," renowned sake served at official Nobel Prize events has achieved the world's first carbon-free Japanese sake by switching to use 100% renewable energy electricity and city gas. Next I visited the Kikumasamune Barrel Sake Meister Factory where you can tour the sake barrel workshop. Having thought of the declining number of barrel craftsmen, Kikumasamune started making barrels in-house. Here you can glimpse the dedication to their barrel-aged sake.

Data
Fukuju (Kobe Shushinkan) ▶MAP 5
1-8-17 Mikagetsukamachi, Higashinada-ku, Kobe https://www.shushinkan.co.jp/kurakengaku (※Reservations required for factory tours)
Data
Kikumasamune Sake Brewery Meister Factory ▶MAP 6
1-9-1 Uozaki-Nishimachi, Higashinada-ku Kobe https://www.kikumasamune.co.jp/tarusake-mf (※Reservations required for factory tours)

3 | Food Exploration

Suidosuji Shopping Street located at Nada Ward, Kobe was established in 1931 and has a long history. It consists of 8 shopping streets stretching from east to west. The nostalgic arcade is about 450m long and it is one of the longest arcade in Kobe. The name "Suidosuji" comes from the water pipes laid about 110 years ago and the road was built above them. Because the street offers various shops selling food and daily necessities, the "Suidosuji Snack Tasting Tour" is gaining popularity. This tour allows visitors to experience the local food culture while communicating with shop owners. Stops are made at traditional Japanese confectionery shops, bento shops, butchers, and pickle shops offering a chance to encounter with the authentic face of Kobe.



Data

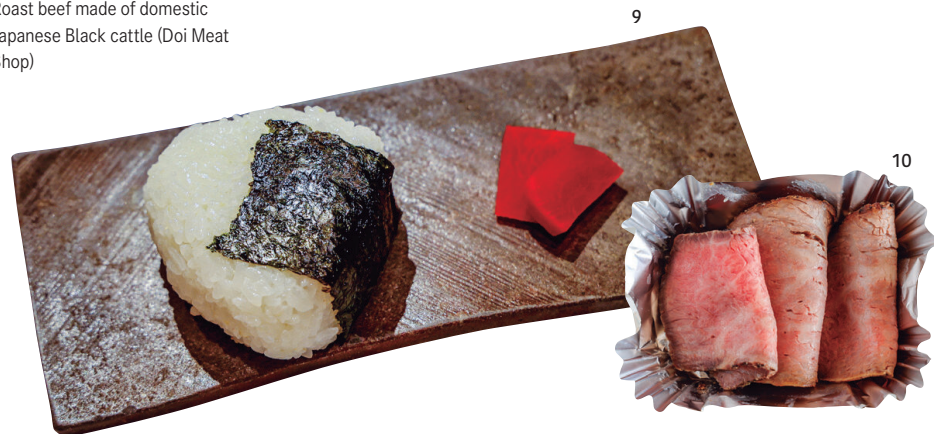
Suidosuji Shopping Street ▶MAP ⑦

Suidosuji, Nada-ku, Kobe
<https://www.suido-suji.com>

Suidosuji Shopping Street Food Tour

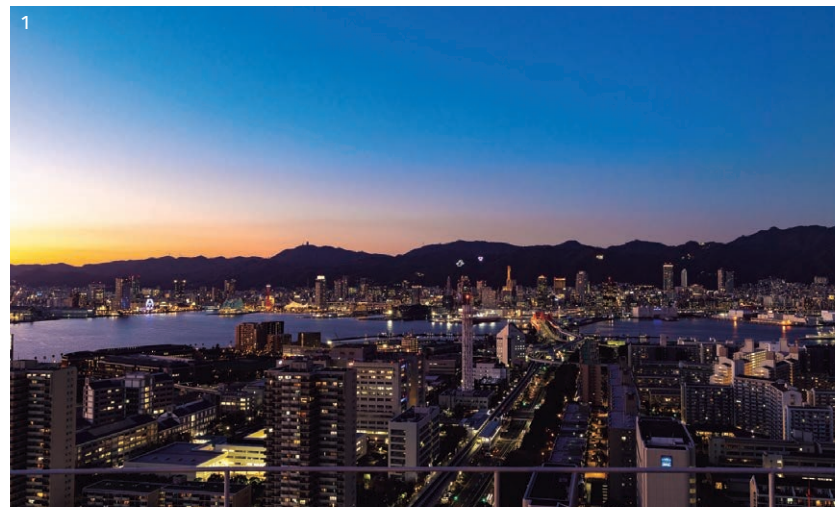


1: Miyoshido, a century-old Japanese confectionery shop. 2: Doi Meat Shop, established in 1930 where you can bite croquettes on the spot. 3: Retro-style arcade of Suidosuji Shopping Street. 4: Small Suidosuji Ebisu Shrine located in the shopping street. 5: BI.T.O. WA, a salon combining a wine shop and a beauty parlor. 6: Tsukemono Chaya Takecho, a shop specialized in natural and fermented foods. 7: Osozai Ichiyo, a homey shop offering bento boxes and side dishes. 8: Miyoshido, a family-run Japanese confectionery shop. 9: Rice balls made with carefully selected salt and pickles (Tsukemono Chaya Takecho). 10: Roast beef made of domestic Japanese Black cattle (Doi Meat Shop)



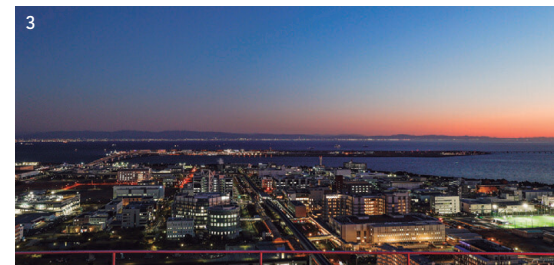
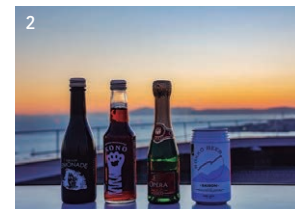
4 | Kobe's Night Views

City Lights At Night A 360-Degree Experience



The Rooftop Terrace Sorafune opened in 2022 offers the most spectacular panoramic night view of Kobe. From here you can enjoy a complete 360-degree vista including Kobe Port, Port Island to the south, the city of Kobe, the Mt.Rokko range and

Osaka Bay. It may be fun to imagine the routes of cruise ships entering and leaving the port. The open-air space is nice and refreshing and you can savor the beautiful jewel box-like view of Kobe at night with a drink in hand.



1: Wide-ranging night view from Kobe city to Mt. Rokko is breathtaking. 2: Admission at night includes one drink. 3: Night view of Kobe Airport side, departing planes can be seen.

Data

Rooftop Terrace Sorafune KOBE
 (Kobe Portopia Hotel, Main building) ▶MAP ⑧

6-10-1, Minatojima Nakamachi Chuo-ku, Kobe
<https://www.portopia.co.jp/sorafune/>

5 | Devoted to Bread

Baker's Dedication

'Ça Marche' a beloved bakery at cosmopolitan Sannomiya is known for its constant queues. Chef Takaaki Nishikawa who co-founded 'Boulangerie Comme Chinois' with Saku Shoji says that 'My starting point was the joy I felt as a child when I served sweets to my father's guests.' The bakery is running the 'Heart Bread Project,' by selling heart-shaped bread and donations are being made to disaster-stricken areas.



1: Flavorful hard breads made with domestic wheat and natural yeast are popular. 2: Chef Takaaki Nishikawa, the owner of Ça Marche is creating uniquely innovative breads.



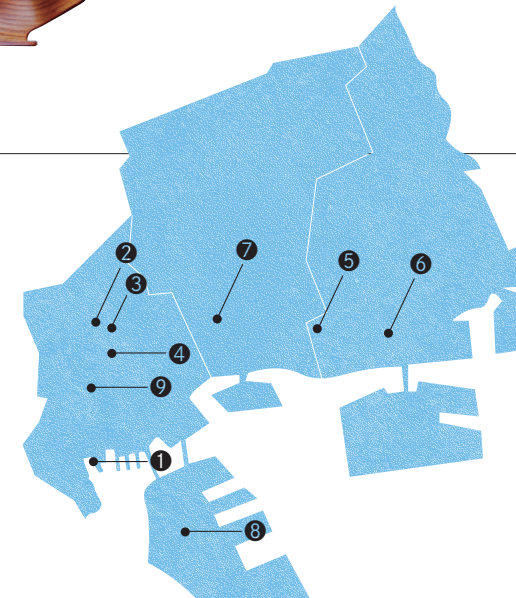
Data

Ça Marche ▶MAP ⑨

3-1-3 Yamamotodori, Chuo-ku, Kobe
https://www.instagram.com/camarche_2010

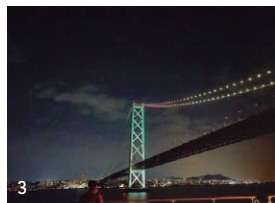
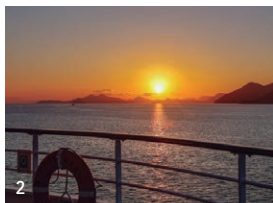
Kobe Map

Kobe full of easily accessible tourist spots around the port area





1: The cruise ship is anchored at Tomonoura in the morning.
 2: As the ship departs from Tomonoura the setting sun bathes in the Seto Inland Sea in its glow. 3: The night view of the city and the Akashi Kaikyo Bridge crossing the night sky at dusk. 4: Tomonoura, one of the ports of call for the cruise. 5: A passenger ship anchored in the calm Tomonoura.



| 6 | CRUISING

The Joy of Cruising from Kobe Seto Inland Sea from the Ship

After the journey in Kobe the long-awaited 4-day cruise begins. The Cruise Ship sails through the multi-island scenery of the Seto Inland Sea and passes under three major bridges.



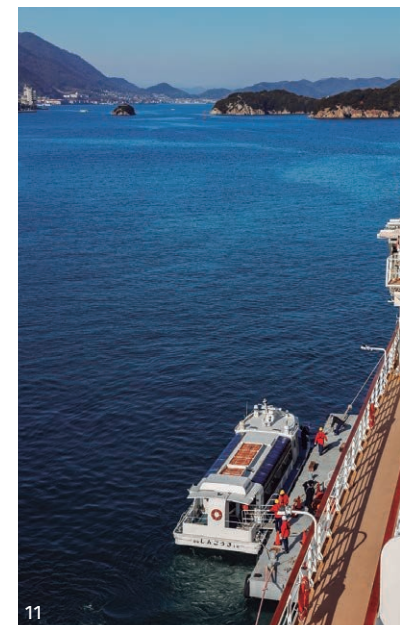
5 PM at Kobe Port the cruise ship quietly departs from the quay, as if it is pushed by the voices of well-wishers calling out, "Have a good trip!" The ship heads west passing under the Akashi Kaikyo Bridge and it seems the ship is chasing the setting sun in the Seto Inland Sea. The calm sea with the shadows of islands approaching and receding and the lights of towns passing by. In the distant night sky, tiny specks of light decorate the bridge connecting Honshu and Shikoku. As the cruise ship anchors off Tomonoura, islands tinged

with the colors of dawn emerge. A barge is brought alongside preparing for tender boat operations to Tomo Port. Popular as a 'hidden gem' with its townscape continuing from the Edo period*, this port town is located almost in the center of the Seto Inland Sea. The town prospered as a place where ships waited for the tide. Due to its location tidal currents change at the boundary with a significant tidal range becoming 4 meters. In the past ships traversing the Seto Inland Sea would enter Tomo Port at high tide and depart at the ebb.

* Edo Period...From the 1600s, a period of unique cultural development due to the national isolation policy.

The symbol of the town, the 'Jiyato' (eternal light), once played a role as a lighthouse. In 1867 the 'Iroha Maru' led by Sakamoto Ryoma collided with the Kishu clan's 'Meiko Maru'. The old house where Ryoma reportedly hid is now open to the public. The scenic beauty of Tomonoura inspired Michio Miyagi to compose 'Haru no Umi' (Spring Sea) and Tomonoura became the first national park in Japan. Director Hayao Miyazaki is said to have stayed here for months conceptualizing the animated film 'Ponyo' (2008).

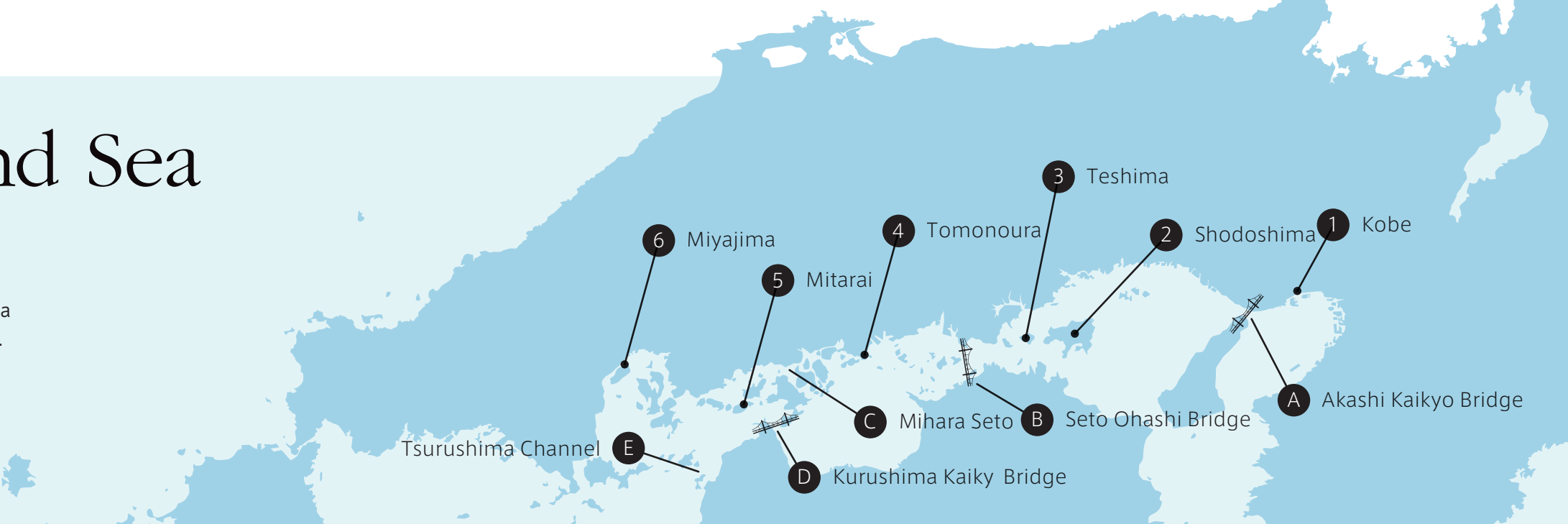
One of many charms of cruise travel is the ease of reaching destinations in a moving hotel. Food is another significant element with menus sometimes featuring specialties of the ports of call. On the morning of the third day we return to Kobe Port with Mount Rokko towering above. The calm water of the Seto Inland Sea minimizing our concerns about seasickness allowed us to enjoy the views of island silhouettes and town lights. It was a cruise packed with beautiful scenery and delectable cuisine.



6: Benten Island seen from Taichoro, a Korean envoy once praised the view of Bente Island and Sensuijima as the most beautiful scenery in the eastern part of Japan. 7: The 11-meter-high night-light of the Edo period was lit by herring oil. 8: The Hamagura is the exhibition hall for the relics of "Iroha Maru," a ship related to Ryoma. 9: The Taichoro welcomes visitors with a performance of the koto (Japanese harp). 10: Returning to the Naka Pier Cruise Terminal with a view of the Kobe Port Tower. 11: A tender boat alongside the cruise ship at Tomonoura.

Highlights of the Seto Inland Sea Cruise from Kobe

Embark at Kobe Port and enjoy the breathtaking scenery of the Seto Inland Sea such as majestic bridges and picturesque spots for an unforgettable journey.



Views from the Cruise Ship



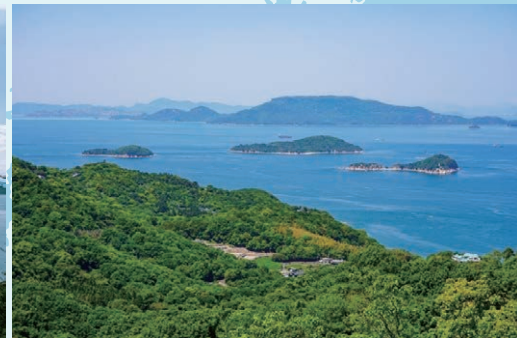
A | Akashi Kaikyo Bridge

The Akashi Kaikyo Bridge connecting Kobe City and Awaji Island completed in 1998 is one of the world's largest suspension bridges. It spans a total length of 3,911 meters, and its main towers reach a height of 298 meters.



B | Seto Ohashi Bridge

The Seto Ohashi Bridge connecting Kurashiki City and Sakaide City is the world's longest bridge complex that accommodates both rail and road traffic was completed in 1988. The term "Seto Ohashi" includes the six bridges spanning over the 9.4 km-wide sea strait.



C | Mihara Seto

Known for its beautiful seascape dotted with numerous islands, Mihara Seto offers one of the finest views in the Seto Inland Sea. In spring cherry blossoms at Mt.Fudekage and Ryuo Mountains bloom and the breathtaking scenery can be seen from the ship.



D | Kurushima Kaiky Bridge

This is the collective name for the three suspension bridges totaling 4.1 km in length across about 4 km-wide Kurushima Kaikyo Strait between Oshima and Imabari City. The strait is known for its maximum current speed of 10 knots, and it has long been a difficult place to cross.



E | Tsurushima Channel

It is a narrow channel between Iyonada and Akinada off the coast of Matsuyama City, Ehime Prefecture. The Seto Inland Sea is a unique place where people live close to their daily lives and the sea routes are also in the vicinity.

Ports of Call on the Seto Inland Sea Cruise



1 | Kobe [Port of Departure]

Kobe is one of the most famous historical international trade ports in Japan with its excellent natural harbor conditions. The port offers easy access to numerous tourist attractions and a variety of sightseeing options are available before and after the cruise.



2 | Shodoshima

Shodoshima is home to Kankakei Gorge, one of three most beautiful gorges in Japan, and to Olive Park overlooking the Seto Inland Sea. Visitors can also visit "Shōyu no Sato," the area where many active soy sauce and tsukudani factories still in operation since the Meiji* era.



3 | Teshima

Known as one of the "art islands" along with Naoshima and Inujima, Teshima is full of art appreciation opportunities at places like the Teshima Art Museum. The island is also well known for its picturesque terraced rice fields irrigated by the water from Mount Danyama located at the center of the island.



4 | Tomonoura

Located roughly in the middle of the Seto Inland Sea coast, Tomonoura is a rare port town where traditional townhouses and port facilities dating back to the Edo period are still preserved together. It is also a popular location for filming movies and TV dramas.



5 | Mitarai

Mitarai thrived as a port town for waiting for the tides during the Edo period. Many historical buildings are remaining with narrow alleyways crisscrossing the area. Walking through the town gives you the feeling of stepping back in time.



6 | Miyajima (Hiroshima)

Miyajima is considered as one of the three most scenic spots in Japan. It is a favored spiritual spot and the visit to Itsukushima Shrine, Daishoin Temple and Mount Misen is very popular. Visitors can also enjoy local delicacies like oysters and anago (conger eel).

⁹ *Meiji era... The Meiji era began in 1868 and saw rapid modernization in all fields.



View of Kobe Port with a cruise ship seen from the Kobe Port Tower renovated in April 2024

