

HYOGO AREA MAP



Distance from the port

- Arima hot spa ... 23km / 30 min
- Yuge Farm ... 15km / 30 min
- Kiku-Masamune Sake Brewery Museum ... 9km / 25 min
- Suidosuji shopping street ... 5km / 15 min
- Carpentry Tools Museum ... 3km / 13 min
- Sumadera Temple ... 11km / 30 min
- Akashiura Fishing Port ... 25km / 50 min
- Awaji Island ... 33km / 50 min
- Himeji ... 62km / 1.25 hours

Kobe, having developed as one of Japan's leading international port cities, is the place where the miraculous encounters await. Its unique geography surrounded by the Rokko mountains overlooking the harbor, and the Seto Inland Sea stretching out below, gives birth to the beef of unparalleled quality and the bounty from the ranch, the finest sake brewed with the Miyamizu water, and the oldest hot spa retreat in Japan with the traditional entertainment. Whether you are visiting for the first time or returning for another trip, Kobe always has something new to discover. Here are some of the most special experiences that Kobe is privileged to showcase.

SPECIAL SHORE EXCURSIONS

1

Taste & Learn Kobe Beef

DATA

- Capacity of participants : 2 - 20 pax
- Time required : 2 hours +
- Tour includes

Explanation of Kobe beef by the chef
Lunch course with side-by-side tasting of
Kobe beef and Kuroge Wagyu loin

*There are four teppanyaki tables available.
4 pax per table is recommended, but 5 can
be tightly seated, though it may feel slightly
cramped.



2

Kiku-Masamune Sake Brewery Museum

DATA

- Capacity of participants : 5 - 20 pax
- Time required : 2 hours
- Tour includes
 - 1 Museum tour
 - 2 Learning how sake barrels are made
 - 3 Sake tasting with different sake vessels



3

Yuge Farm Tour & Lunch

DATA

- Capacity of participants : 10 - 40 pax
- Time required : 2.5 - 3 hours
- Tour includes
 - 1 Farm tour (dairy farming, herb garden, small biogas unit)
 - 2 Lunch made with the farm's fresh dairy products



HP (Japanese)



YouTube



4

Akashiura Fishing Port Auction & Sushi Lunch

DATA

- Capacity of participants : 2 - 10 pax
- *Contact them in advance with more than 10pax.
- Time required : 2.5 hours
- Tour includes
 - 1 Viewing of the lively fish auction on-site
 - 2 Tasting of Akashi Nori (seaweed)
Special Sushi Lunch



YouTube



5

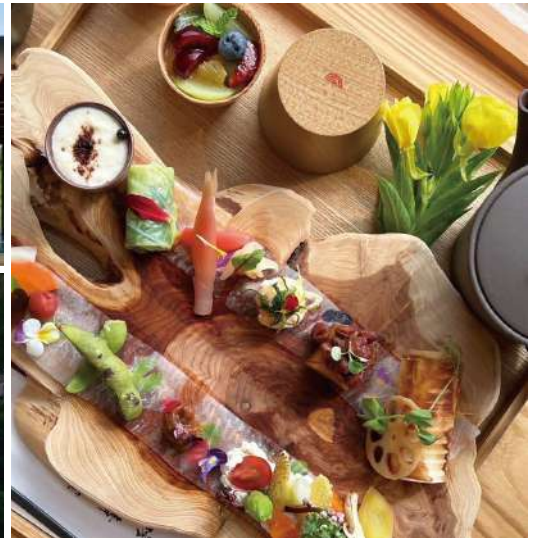
Meditation in Awaji Island

DATA

- Capacity of participants : 1 - 40 pax
- Time required : 1 hour +
- Tour includes
Healing experience with yoga and
meditation amidst deep nature



HP



6

Fire Ceremony at Sumadera Temple

DATA

- Capacity of participants : up to 30 pax
- Time required : 2 hours
- Tour includes
 - 1 Guided temple tour
 - 2 Participation in a Goma Fire Ceremony



7

Arima Onsen Retreat – Gourmet Lunch & Soothing Hot Spring

DATA

- Capacity of participants : 10 - 50 pax
 - Time required : 3 hours
 - Tour includes
Lunch at the classic hotel (traditional kaiseki course) and
hot spring bathing
- *Shuttle service to and from Arima Onsen town is available.*



8

GeikoCafé “Ito” & ArimaOnsenTown

DATA

- Capacity of participants : 1 - 20 pax
- Time required : 1 hour
- Tour includes
 - 1 Geiko Dance Performance
 - 2 Traditional Japanese Instrument Experience
 - 3 Tea Service (Matcha and Japanese sweets)



HP



9

Suidosuji Snack Tasting Tour

DATA

- Capacity of participants : up to 10 pax
- Time required : 2.5 hours
- Tour includes
Experience of the local food culture while communicating with shop owners



HP (Japanese)



10

Taiko Drumming Lesson

DATA

- Capacity of participants : 4 - 20 pax
- Time required : 2 hours
- Tour includes
 - 1 Introduction of Japanese Taiko drums
 - 2 Playing experience Taiko
 - 3 Taiko performance by professional performers



HP (Japanese)



11

Carpentry Tools Museum & World Heritage Castle

DATA

- Capacity of participants : 10 - 14 pax
- Time required : 9 hours
- Tour includes
 - 1 Museum tour
 - 2 Lunch
 - 3 Himeji Castle tour

